

Children's

HOME

ANNUAL
REPORT

FY 2019-20

Our Mission

- **EMPOWER**
- **STRENGTHEN**
- **ENRICH**

The Children's Home of York empowers children to thrive, strengthens families, and enriches communities.



Contents

Chairman's Message	03
Leadership and Board	04
President's Message	05
Our History	06
Financials	07 - 10
Children's Home of York Programs	11 - 15
Donor Recognition	16 - 18



Children's Home of York Board Members and Leadership Team attending our 2020 Annual Meeting at the Revs Stadium in October of 2020.



Words from the Board Chair

Thank you. How else to introduce our Annual Report than to simply express our sincerest gratitude to all who have given so much to our Children's Home of York this past year. Without all of your support, your encouragement, your talent, and resources, we would not have weathered this storm; we are grateful, beyond words and measure.

The bylaws of our Children's Home of York require an annual meeting to be convened at a time and place to be determined by our Executive Committee. We met in late October and as I removed my face covering to address the intimate gathering, I was struck by something I hadn't felt in several months. I was struck by, for want of a better description, sameness. I felt the same sense of pride and compassion that I have felt so often while serving with the indomitable team of professionals at Children's Home. I felt the same inspiration as I shared the evening with our dedicated board members. And I felt the same sense of promise and duty as I shared the podium with our President and CEO Ron Bunce and our board Vice Chair David Bernhardt. Sameness felt good that evening and it reminded me of how blessed we are to bring all of these dedicated members of our Community together in service.

Now in our 156th year, we know we have challenges ahead, obstacles to navigate uncertainty to assuage. The social and economic pressures of this past year have required uncommon resolve in the face of adversity, and a team steadfast in purpose. That team is in place and I am so very proud of our employees, our volunteers, and our Board of Directors for not only their tenacity, but also the empathy with which they have served.

Sameness. As I was last year, so, too am I this year, inspired each and every day by those with whom I serve and grateful for their selfless commitment to the Children's Home of York.

JT Hund

Board Chair

Leadership Team



Ron Bunce



Colleen Murphy



Melissa Bickel



Tammy Weimann



Terri Tolomeo



Cecilia Keeseey



Lisa Fritz

Board of Directors



JT Hand

Board Chair



David Bernhardt

Board VP



Andrew Koplitz

Board Treasurer



Carrieann Frolio

Board Secretary



Dale Brickley



Ashley Cherry



Steve Klunk



Rudy Kocman



Phyllis Leonard



Melissa Markey



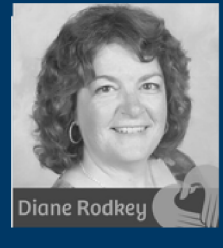
Allison Meckley



Zach Nahass



Eloise Newsome



Diane Rodkey



Darla Smith



Vicki Stewart

Words from our President

As I reflect upon my first year with Children's Home, the proverb "It takes a village" resonates with me. The work of Children's Home is complex. Those we serve come to us with a myriad of challenges and poverty, race, diversity and intersectionality compound that complexity. From providing shelter and a loving home for children in foster care, for those seeking adoption or meeting the physical, psychological and sociological needs of those in our residential programs, there is no shortage of need. With those needs comes a corresponding need for skills, experience, dedication and action. No one person can meet the needs of those who come to Children's Home for care. It truly takes a village and that village includes our team and resource families, our board and our philanthropic community.

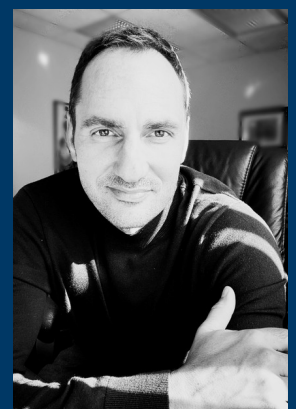
The team at Children's Home remains the organization's greatest asset by far. It overshadows any other asset listed on our Balance Sheet. If one could quantify the collection of their talents, experience and commitment to our children and families, it would be an astounding figure. From our amazing cooks, mental health workers, social workers, nurses, and maintenance team of one, to CQI, HR, finance and Associate Directors who create the glue required to run an organization of our magnitude, this is a formidable team. Each of us independently lack the skills required to meet the needs earlier mentioned. However, together, all skills required are represented with abundance.

Beyond the team at CHOY, one cannot overemphasize the role of the governing body. Our board not only brings their own set of professional talents and experience to guide us, but they also serve as an accountability arm that continuously strives for demonstrable results. I am especially mindful of the momentous work happening at the committee level. The Chairs of each committee have met with their respective committee members to assess their role, determine their goals for the year, and are actively developing plans to ensure their goals are met. The volunteer Board of Children's home is a critical component of our village as we work together to weave the components of our strategic plan and the work of the committees to achieve results.

Of course, this 155 year old organization would not have sustained without the dedication and commitment of the philanthropic community. A substantial percentage of our budget is derived from a very generous York community who recognize that it takes a village and who feel a sense of responsibility to ensure the most vulnerable among us are cared for. Together, we commit our collective talents in our efforts to fulfill the mission of Children's Home and continue its enduring legacy. As we work to accomplish much in 2021, I am honored to be a member of this village!

Ron Bunce

President/CEO



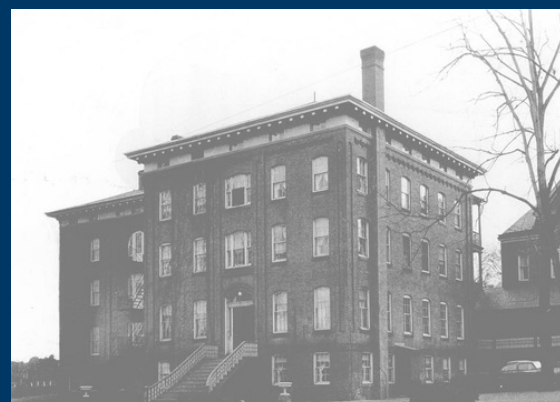
CHILDREN'S HOME HISTORY

The Children's Home of York has a rich history and roots woven generations deep throughout the York community. In our early days, many knew of us as "The Home" or the orphanage with an imposing presence on the corner of Philadelphia and Pine Streets. To others, however, who needed us most, we were just called home.

Established during the Civil War and for over 100 years thereafter, the Children's Home operated as a traditional orphanage, characteristic of the time period. As the field of social science and child and family welfare expanded our understanding of the needs of children and the settings in which they flourish, the Children's Home responded accordingly.

In the 1960's it became nationally recognized that there were better ways to care for children in crisis than large-scale institutional settings and the orphanage was demolished. Just prior to the demolition there was a movement towards smaller group homes that sought to mirror a family setting and the Children's Home has embraced this model up until now. As science continues to provide new insights, we are learning much about trauma and adverse childhood experiences. We are better understanding that lifelong outcomes are more often than not improved when children remain emotionally and physically as close to their home, family, loved ones, school, faith tradition and community as possible.

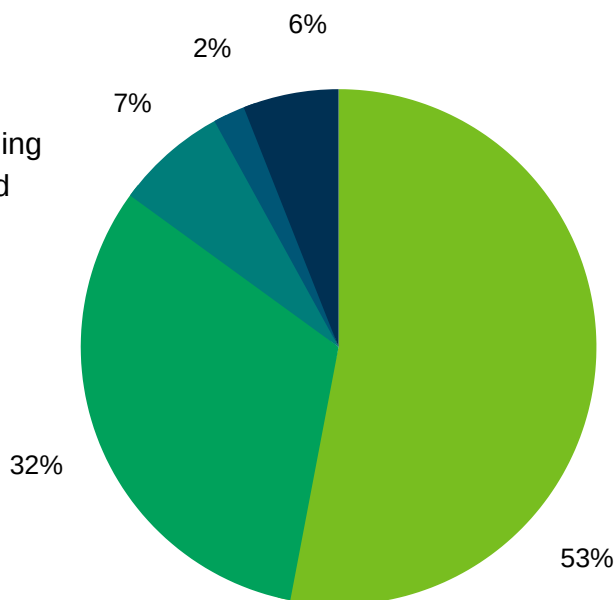
Today, the agency provides a broad range of trauma informed programs and services that support the physical, psychological and sociological needs of children, young adults and families in York and surrounding counties. We continue to do so in small group settings where appropriate and seek to expand our supportive and preventative services in the future. We are preparing for this change in our service delivery model and we will evolve to meet both current and emerging needs of some of our most vulnerable children. Simultaneously, we will continue to develop approaches grounded in evidence based practices known to positively impact lifelong outcomes of children. Children's lives depend upon our success and the support of our community.



Finances 18/19 Review

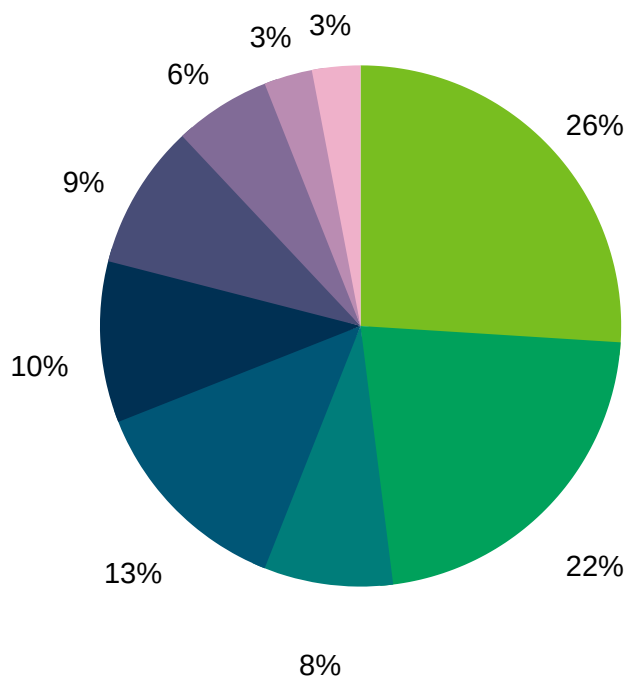
Program Revenue

\$3,391,571	53% Board fees and program funding
2,057,960	32% Insurance/managed care fund
473,700	7% Diakon Services (SWAN)
144,712	2% Other local services
372,052	6% Grants
<u>\$ 6,439,995</u>	



Program Expenses

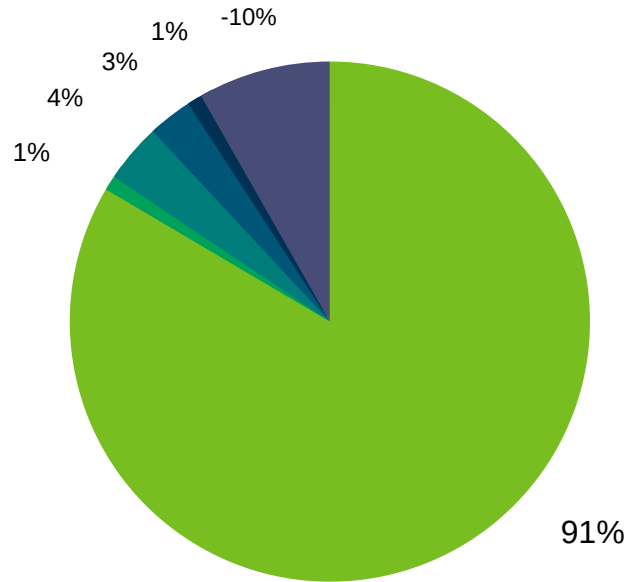
\$1,953,538	26% Foster Care
1,675,372	22% A.N.G.E.L. Center
595,092	8% Administration
996,975	13% BRIDGES
765,755	10% George Street ILP
664,028	9% Adoption
473,640	6% Prevention Services
243,858	3% IPT
245,375	3% RISE
8,665	0% Diag & ED
<u>\$ 7,622,298</u>	



Fundraising 18/19 Review

Fundraising

1,933,059	91%	Contributions
30,252	1%	Grants
89,279	4%	Trust Income
72,259	3%	In-kind Donations
13,470	1%	Special Events
<u>(213,418)</u>	- 10%	Fundraising costs
1,924,901		



Other

1,412,440	Investment Income
5,083	Comm Foundation Trust
(20,445)	Beneficial Int in Trusts
3,898	Rental (gym)
<u>904</u>	Other Income
1,401,880	

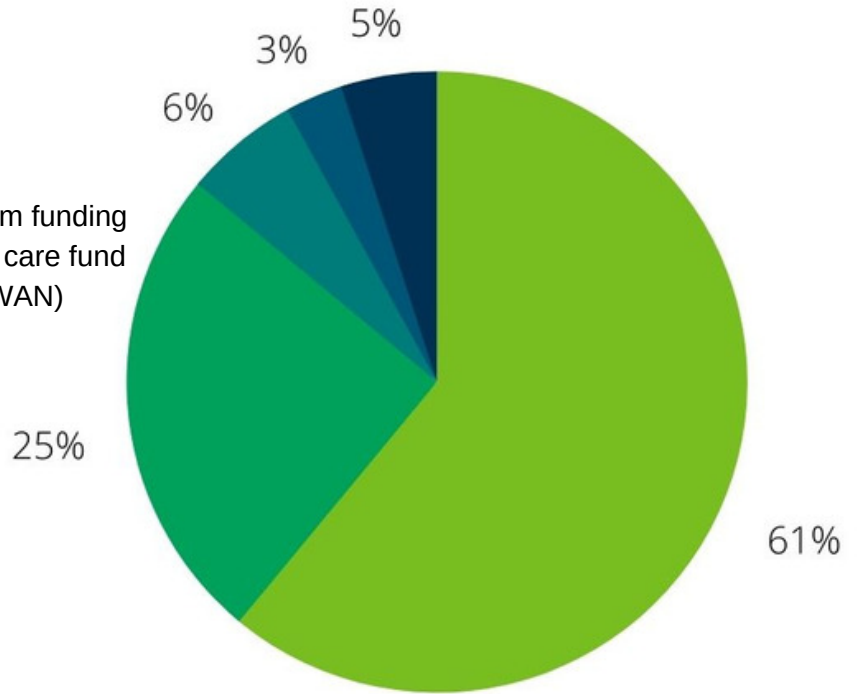
2,144,478 Change in Net Assets



Finances 19/20 Review

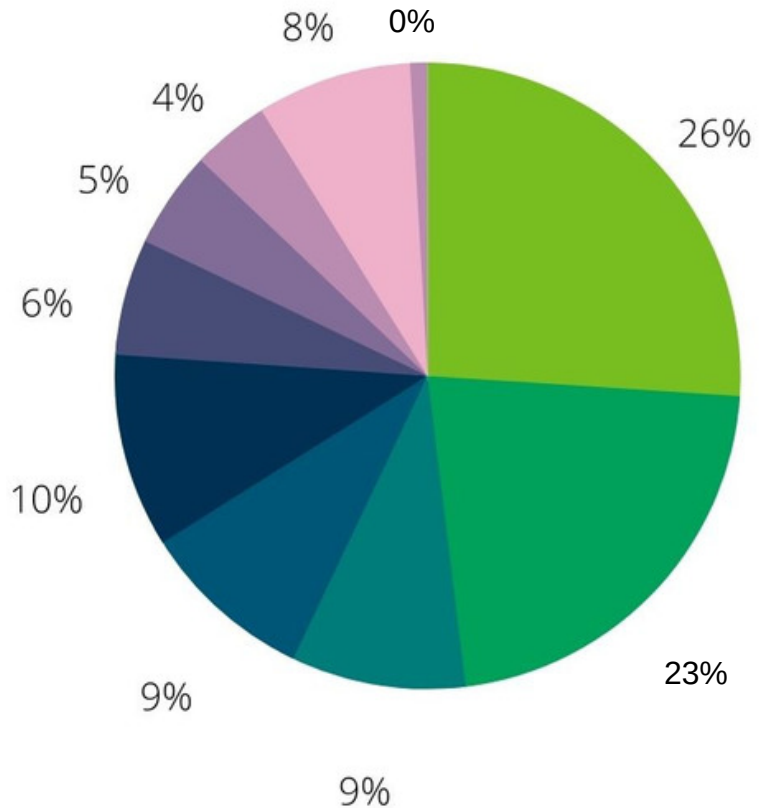
Program Revenue

3,819,784	61%	Board fees & program funding
1,572,877	25%	Insurance/managed care fund
368,800	6%	Diakon Services (SWAN)
184,443	3%	Other local services
<u>295,951</u>	5%	Grants
6,241,042	100%	



Program Expenses

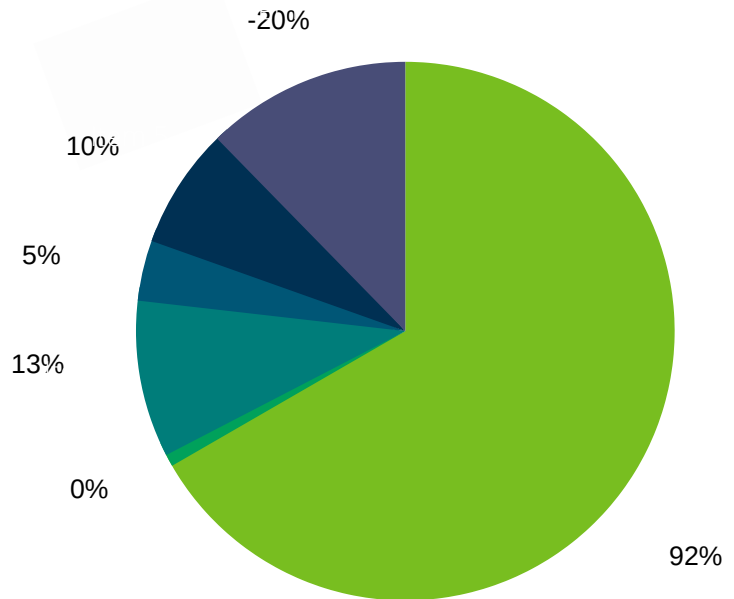
1,848,227	26%	Foster Care
1,593,520	23%	A.N.G.E.L. Center
589,464	9%	Administration
636,485	9%	BRIDGES PHP
721,854	10%	ILP at George Street
442,427	6%	Adoption
326,470	5%	Prevention Programs
249,665	4%	IPT
558,099	8%	RISE Program
<u>15,655</u>	0%	Diag. & ED
6,990,866	100%	



Fundraising 19 /20 Review

Fundraising

836,555	92%	Contributions
2,500	0%	Grants
114,147	13%	Trust Income
45,732	5%	In-kind Donations
89,047	10%	Special Events
<u>(176,259)</u>	- 20%	Fundraising costs
<u>911,722</u>		



Other

1,515,238	Investment Income
(16,724)	Comm Foundation Trust
(50,058)	Beneficial Int in Trusts
8,600	Rental (gym)
<u>3,352</u>	Other Income
<u>1,460,408</u>	

1,622,306 Change in Net Assets



PERMANENCY PROGRAMS

Foster Care

Permanency provides a variety of services for children and their biological, foster and/or adoptive families from birth through the age of 21. Our structured, specialized family environment provides intensive support with the goal of helping children in our care secure a permanent family as quickly as possible. We work closely with a pool of resource parents to provide a range of support services throughout Pennsylvania while working to ensure a stable, loving environment for the children in our care. We are able to offer diverse environments essential to the successful placement of children and sibling groups of all ages who have a variety of emotional and psychological needs.

192 clients served

Adoption Services

Adoption Services are provided for youth who are referred by the Children and Youth Services Agency, for potential adoptive families who are self-referred or referred by county agencies, and for families who have adopted and desire post-adoption support.

We work with county children and youth agencies to not only provide services to ensure the process is handled quickly and professionally, but also prepare and support the child and prospective family emotionally throughout the entire process.

24 families and 115 children served

Kinship Care

Kinship Care creates another placement option for a child who many not be able to continue living at home with their parents. Kinship Care is when children who have been separated from their parents are temporarily placed in the home of a caregiver who has an existing relationship with the child or the child's natural family. Kinship Care providers can be family such as adult brothers or sisters, cousins, an uncle or an aunt, grandparents or others who have a close tie to the children in need of care.



RESIDENTIAL PROGRAMS

The A.N.G.E.L. Center

The A.N.G.E.L. Center (Advocacy Nurturance Guidance Empowerment Learning) is a licensed, trauma focused residential treatment facility for young women and transgender individuals. We specialize in treating Post Traumatic Stress Disorder in adolescents between the ages of 13 and 18.



While in our care, residents receive intensive therapy including individual, family, group, and expressive therapy modalities conducted by licensed social workers, licensed professional counselors, and/or master's level clinicians. Educational services are provided on site in cooperation with the Lincoln Intermediate Unit No. 12. A.N.G.E.L. Center residents also learn independent living skills and effective coping strategies through therapeutic exercises, yoga and mindfulness, art and creative therapies, as well as an Equine Assisted Psychotherapy Program.

27 clients served

The Independent Living Program at George Street

The Independent Living Program at George Street is a community based therapeutic program for young men ages 15 to 21. Each resident participates in an individualized independent living curriculum focused on instruction, positive therapeutic interactions, and real life experiences. Residents work on developing pro-social, anger management, and conflict resolution skills. Residents also have access to treatment support and prevention services in the community. Residents learn basic skills such as cooking, cleaning, and doing laundry. Key independent living skills such as completing job applications, interviewing, maintaining employment, money management, utilizing public transportation, and securing housing needs are also a focus.



26 clients served

The RISE Program

The RISE (Reaching Independence through Support and Experience) Program is a community-based, specialized Independent-Living-Skills residential program located within the Eastern York School District, in York, Pennsylvania. The RISE Program is approved to provide services for up to 2 individuals between the ages of 16 and 20 at the day of placement but can continue to provide services up to age 21 once admitted. RISE is a program for youth who require individualized 2:1 supervision due to their history of struggling to succeed in other residential settings and/or other lower levels of care. The program is designed to provide specialized independent living services and prepare the youth to either successfully live on their own as productive members of the community, or to return to their families better prepared to be a productive member of the family. In this specialized setting, the youth have the opportunity to learn and practice their independent living skills. Level based privileges allow the youth to practice skills and demonstrate responsibility and accountability in a community setting while supervised by program staff.

2 clients served

PARTIAL HOSPITALIZATION PROGRAM

BRIDGESTM

BRIDGES is a partial hospitalization program for children and adolescents in grades 1 - 12 that are experiencing severe psychiatric symptoms and emotional disturbance. BRIDGES offers a therapeutic milieu employing Sanctuary principles and provides intensive community-based treatment in conjunction with educational instruction from licensed Lincoln Intermediate Unit No. 12 teachers. BRIDGES operates year round and consists of highly structured therapy and offers therapeutic education in conjunction with treatment services during the school year.

58 clients served



PREVENTION PROGRAMS

Strengthening Families 10-14

Strengthening Families 10-14 is a seven session program for families with young adolescents that aims to enhance family protective and resiliency processes and reduce family risk related to adolescent substance abuse and other problem behaviors. This evidenced based curriculum helps parents/caregivers learn nurturing skills that support their children, teaches parents/caregivers how to effectively discipline and guide their youth, gives youth a healthy future orientation and an increases appreciation of their parents/caregivers, and teaches youth skills for dealing with stress and peer pressure.

1,605 clients served



PREVENTION PROGRAMS

PREP

PREP stands for Personal Responsibility Education Program and is for adolescents in Children's Home of York programs and several community based programs. PREP is designed to reduce the number of young people engaged in risk taking behavior by providing them with essential knowledge, attitudes, skills, motivation, and self-esteem. PREP helps teens make healthy choices through life skills and education topics such as HIV/AIDS prevention, pregnancy prevention, and LGBTQIAPP+ issues. The program is designed to produce problem solving skills for HIV/AIDS prevention among high risk youth, particularly those susceptible to drug use and youth in correctional facilities. Last year, we also trained over 100 individuals in LGBTQIAPP+ topics.

93 clients served



Drug & Alcohol Prevention

We offer numerous drug and alcohol prevention education programs. One of the programs is called Too Good For Drugs. This is a free program offered to schools in York County and taught by trained educators from Children's Home of York. Programs are available for youth in grades kindergarten - high school. The classroom program runs for 10 weeks; each lesson is approximately 45 minutes to an hour long. The curriculum is evidenced based and teaches drug prevention strategies while teaching life skills which include: goal setting, decision making, identifying and managing emotions, and resisting peer pressure. Additional strategies and skills are taught while using interactive lessons and activities.

1,292 clients served

Problem Gambling Prevention

We offer Problem Gambling Prevention education in York County for children and adolescents and for senior citizens. "Kids Don't Gamble...Wanna Bet?" curriculum is designed to help students develop the knowledge base and skills necessary to think more critically about gambling. The goal of this curriculum is to discourage underage gambling and improve critical thinking. We focus on the practical realities of gambling, the odds against the gambler, compulsive behaviors that develop with a gambling addiction, and the serious consequences associated with underage gambling. "Gambling Away the Golden Years" is a curriculum designed to educate seniors on the dangers of of problem gambling.

125 clients served



PREVENTION PROGRAMS

Integrated Practice Team

The Integrated Practice Team (IPT) is a fairly new program that was developed in the 2017/18 fiscal year. It is a collaboration between community stakeholders to better serve families with few options beyond separation. During the 18/19 fiscal year the program made a tremendous amount of impact on the community and hundreds of families.

IPT is a community oriented, strength based, individualized planning process aimed at addressing the needs of families and children, both within and outside of formal human services systems, while they remain in their neighborhoods and homes.

The team is comprised of community partners of various backgrounds and disciplines who offer knowledge and expertise toward the development of a Family Action Plan with specific action steps to ensure that the individual needs of the family are met while children live safely in their own homes. Family members are encouraged to attend their IPT meeting. IPT partners will be utilized to assist with family participation as necessary.

Children's Home of York coordinates the IPT process by providing facilitators and support staff for the purpose of facilitating, monitoring, documenting, and tracking the Integrated Practice Team (IPT) process. The IPT process is modeled after a prototype developed by Family Support Services of North Florida, Inc. (FSSNF). The FSSNF protocol has been developing and evolving since 2008 with technical support from Casey Family Programs and has demonstrated high levels of measurable success as a placement prevention protocol.

The program is funded with public dollars through the York County Office of Children, Youth & Families.

523 clients served



Donor Recognition

Our donors make our work possible. Without the tireless support of the community, we would simply be unable to continue to serve those entrusted to our care. The gifts of your time, funding, and resources are deeply appreciated as we continue our mission to strengthen families and enhance the lives of children and families within our community.

Fundraising this year brought a whole new set of challenges due to the worldwide pandemic. We had to alter many existing fundraisers and implement new procedures to ensure the safety of our team members, donors, and clients. The biggest change that we implemented this year was to our Holiday Gift Drive, which became the Holiday Gift Card Drive. We had many new companies and donors participate in our gift card drive and we were able to provide over 150 children in our programs with holiday gifts from their wish lists!

During the 2019-20 fiscal year, we participated in the 3rd Annual Give Local York Event. The event was quite different from the previous two years in the fact that it became an "all virtual" event due to the Covid-19 pandemic, we quickly switched gears and launched a social media campaign and an appeal mailing to help us raise over \$21,741.00!

During this fiscal year we continued our partnership with United Way of York. Funding provided by United Way of York generously supported our Independent Living Program at George Street.

EITC (Earned Income Tax Credit) Program is a very important program for Children's Home. Our BRIDGES Program depends on the generous donations made by companies through the EITC Program. If you are interested in becoming an approved EITC donor please contact the Development Department.

We would like to thank each and every donor who gave to us during the 19-20 fiscal year. Here is a list of our generous donors (in alphabetical order). If you feel your name is missing from this listing please contact our Development Department.

*BB&T	Caterpillar	Merrill Lynch, Pierce, Fenner & Smith Inc	United Way of Capital Region
*Capital Blue Cross	Delta Packaging, Inc.	MOD Super Fast Pizza, LLC	United Way of Central MD
*Graham Capital Company	Dick Jones Sales, Inc.	Mt. Zion Lodge No. 74	United Way of Lancaster County
*M&T Bank	Family Clothes Tree Inc.	PCPA Workers' Compensation	United Way of Milwaukee
*PeoplesBank	Family Clothes Tree Inc.	Presby. Women Kreutz Creek	United Way of York County
*Phila Indemnity Insurance Co.	Festive Board	Primerica	U-Store-It
*St. Onge Company	Fidelity Charitable	Red Lion VFW SGO	Viking Athletic Association
*The York Water Company	First Baptist Church of York	Rock Commercial Real Estate, LL	Wells Fargo Community Campaign
*UPMC Health Plan	Flinchbaugh's Orchard	Rotary Club of York, PA	Wells Fargo Foundation
*Weis Markets, Inc.	Frontstream	Senior LIFE York	WellSpan Health
*Wells Fargo	Gerber Family Giving Fund	Sesame Temps, Inc.	WellSpan Neonatology
*York Traditions Bank	GGG Information Services	Shiloh American Legion /Post 7	White Rose Leadership Institute
12th Ward Independent	Giant Foodstores	Silver Spurs Cowboy Church	Winters Performance Products, I
Aetna Foundation	Glatfelter Insurance Group	Small Steps Daycare School	WY VFW Auxiliary Memorial Post 8591
AmazonSmile	Heritage Hills Resort	South Western High School	York Builders Association
American Hydro Corporation	Heritage Valley Federal Credit U	Sprenkle Village Garden Club	York County Bar Foundation
BAPS Auto Paints & Supply	Hershey Bears Booster Club	Stabler Foundation	York County Community Found.
BAPS Motor Speedway	K. D. Rosengrant, Inc.	Stewart & Tate - Stewart Foundation	York White Rose MOTT
Bethel UM Church Mens Group	Kinsley Construction	The Kids Trust Fund	Zeredatha Lodge No. 451, F&A
Bethlehem Stonepile UMC	Lowther Manor Lodge	The York Water Company	Zion Lutheran Church
Bruce Madelyn Snyder Found.	M&T Bank	Todd Fisher Construction	
C&S Wholesale Grocers	Marketing Works	Treysta Technology LLC	
C.S. Davidson, Inc.	Mary & Dan Dent Fund - The T.		*EITC donors
	Rowe Price Program		

Jeanne Addison	Virginia Carter	Nicole & Teresa Flowers	Sarah Hieber
Brian Addison	Kevin Castiglia	Anthony Frey	Joseph C. Higgins
Kent & Nancy Ahrens	Taylor Castle Baron	Charlie Frey	Tammy Higgins
Samuel A. Altland	Rebekah Cerha	Philip Frigm	Claire M. Hoffman
Josephine C. Alwine	Joseph Cervenak	Lisa Fritz	Jonathan Hoffman
Nancy Anderson	Kelly Chambers-Honeycutt	CarrieAnn Frolio	Josh Hoffman
D. Reed Anderson	Dean Cheesebrough	Susanne Fuhrman	Rick & Cindy Hogentogler
Ronald G. Anderson	Janice Cheesebrough	Kristi Gaines	Tom Hoke
Nancy Anderson	Ashley Cherry	Zachary Galloway	Erin Holman
Kelly Arcieri	Louis & Jane Cirelli	James Gante	Lester & Barbara Holtzinger
Harriet Arnold	Lucreta Clark	Michael E. Gantz	John Hoover
Barry Ashway	Amy Clark	Krista Gardner	Mary Hoover
Harriet Ashway	Shari Cohon	Michael Garrety	William A. Hornberger
Sharon Ayers	Carl Colombo	James Geiselman	Anita Hostler
Karen Backus	St. Onge Company	Shelly Geller	H. R. Hostler
Bill Bair	Donna Cook	Elizabeth Gentzler	Ray Hovis
Carol & William Bair	Curtis O. Cooper	John George	Jennifer Howell
Raymond F. Baker	Robert F. Cox	Kristi George	Ruth M. Hughes
Beth Barba	Wendy Crane	Cheryl Gerhart	Patti Hunt
Douglas Barton	Justin Crawford	James A. Giardina	Kraig Hursh
Thomas Baublitz	Melanie Crone	Karen Gilbert	William Hynes
Dana Becker	Debra Crowe	Angela Gilson	William Igo
Mildred Becker	Sarah Crowther	Jayd Glatfelter	MaryLou Inners
Candi Jo Becker	Douglas Crumm	Donna Glatfelter	Norma Innerst
Danita Belanjer	Bobbie Daley	Michael L. Gleim	Karl Jacoby
Jacqueline Belker	Robert D'Angelo	Richard Gleitz	Puneet Jairath
Michael Benjamin	Jean Daryman	Michael Glezer	Lori Janasik
John Bentley	Todd Davies	Allison Godfrey	Dean Jerome
David Berger	Joann Day	Deborah Good	Emily Jones
Penny Berkheimer	Crystalann Deardorff	Michael Goodstein	Randy Jones
David Bernhardt	Kathleen DeBolt	Madalyn Gordon	Leslie A. Jones
Chris Bertok	Charles Deel II	Melissa Gordon	Barry Julius
Tim Berwager	Helen Deitch	Donald F. Goulden	Kayla Kale
Jaime Betz	Courtney Deitz	Doug & Tracy Graham	Diane Kearney
Melissa & Garry Bickel	Alan Dellinger	Douglas J. Graham	Tina Keeler
Steve Billet	Kristine Denney	Cynthia Greco	Cecilia Keesey
Giorgio G. Bissoli	Thomas Deroche	Sandra A. Green	Matt Keesey
Judy Blakey	Megan Devine	Gretchen Gregory	Thomas J. Keesey
Dorothy Blevins	Allen W. Dickensheets	Michael Greiman	Chelsie Keiser
Janet Bochichio	Albert J. Diehl	Paul Grill	Richard Keller
Larry E. Bollinger	Christine E. Dombrosky	Steve Grizzell	Dennis Kelly
Marsha D. Bornt	Paul W. Dunnett	Melissa Groetz	Jeremy Kile
Maggy Bowers	Everett & Samantha Dyal	Jeffrey Grove	Patrick Kinsley
Robert Boyer	Megan Eckbold	Simon E. Grubb	Cathy Klinedinst
D. L. Brandl	Chloe R. Eichelberger	Joseph T. Gurreri	Stephen Klunk
John W. Brant	Craig D. Ellis	Michael Gutshall	Angela Klunk
Paul Brechbiel	Robert Emswiler	Betty Guyer	Jessica Klunk
Kenneth R. Brein	Michael R. Ensminger	Monique Hale	Anne C. Knorr
Madeline Brenner	Brianna Ensor	Dennis Haller	Denise Kohr
Gail Bricker	Raymond D. Epley	William D. Hammen	Tim & Linda Koller
Dale Brickley	John Erickson	JT Hand	Andrew Koplitz
James & Tracy Brown	Tana Eshenaur	Jessica Hardway	Mike Kowalski
James H. Brown	Georg Evans	James R. Harnish	Kelly Kozain
Nathan & Emily Brown	Kerry Fagelman	Phyllis Harnish	James K. Kreeger
Meg & Peter Brubaker	Howard Faircloth	Sue Harry	Donald Kroft
Pat Brubaker	Corinne Faraone	Christy Hartman	Ruthanna Krone
Charles Buckley	Rodney C. Feeser	Steven L. Hartman	Henry R. Krout
Chad Bumbaugh	Jade Fertich	Kenneth Heaps	Mary Kurnik
Ronald Bunce	Kimberly Fetrow	Beatrice Heath	Pam Kurtz
Barbara Bunting	Stephanie & Jason Fink	Melvin D. Heidler	Michele Lam
Ralph E. Burns	Elizabeth Fives	David Herrick	Anna Lamond
Thomas H. Butcher	Jennie Flay	Kay Herrick	Jordyn Landis
Anthony P. Campisi	Jennie H. Flay	Jacob E. Hershey	Jackie Landman
Harry Carnahan	Larry Flemmens	Aubrey Hess	Matthew Lane

Stephanie Laughton
Dennis R. Lawyer
Sean Lazarus
Ada Lecrone
Steven G. Leiphart
Jill Lenick
Darlene Leonard
Phyllis Leonard
Susan Lever
Timothy G. Lever
Jeffrey Lewis
Amie Lippert
Jonathan Liss
Jill Lordan
Cheri Lorey
Jane Loucks
Gail Loucks
Richard Lowry
Jeff Ludwig
Meredith Lutz
Jeff Mackay
S. A. Manbeck
Karen Markel
Melissa Markey
Kathy Markward
Lorenzo Marsey
Todd Marsteller
Jack Martin
Robert E. Martin
Carole Martin
June Massey-Brown
Sandra R. McCauslin
Lewis & Nancy McCleaf
Kristin McDermott
John & Mary Beth McGreevy
Douglas McIntosh
Allison Meckley
Gail Meisenhelter
Priscilla Melhorn
Denise Melhorn
Chanizo Meniru
Eileen Miller
Esther Miller
Gregory Miller
Jack Miller
Jacob L. Miller
Stanton L. Miller
W. Jack Miller
Julie Miller
Larry D. Miller
Stanton L. Miller
Anne G. Miller
Donald Monroe
Nance Montgomery
Sheela Moorthy
Anita Morgan
John B. Morgan
Margaret Morgan
Douglas E. Moyer
Alice Muldrow
Jack & Colleen Murphy

Rene Murray
Martie Musso
Penny Myers
Joan Myers-Verdier
Lindsay Nace
Sandra & James Neal
Glen Neal
Laurie Nelson
Susan Nenstiel
Edward Neuman
Andrea Neumann
Eloise Newsome
Beatrice Nicklow
Emma Jane Noll
John Noll
Patrick O'Callaghan
Tammy Ort
Thomas Ortenzio
Sandra Osmun
William S. Panaro
Isha Patel
David Peck
Stephen T. Perko
Patricia A. Peters
Cheryl Peterson
Nicole Pham
Anthony Pinkney
Robert Plumeri
Jane Pontz Estate
Thomas H. Pope
Dwight Prall
Harlowe & Susan Prindle
Robert Pullo
Michael B. Quickel
John P. Raab
John D. Ranzani
David & Debra Raver
Anita Rawlinson
Robert Ream
Amber Reed
David Reichow
Lyndsay Reidel
Fran Reinhard
Fred Reiss
Temple Beth Israel School
Lois Reynold
Jonathan E. Rhoads
Terri Riedel
Carol Riehle
Bradley Rineholt
Natividad Rivera
Timothy Roberts
Diane Rodkey
Kristin Rohrbaugh
Lisa Rohrbaugh
Anna Rohrer-Ressler
Denise Rooney
Melissa Rosario
Joyce & Karl Rosengrant
Dwain Rosengrant
Evelyn Roser

Myrna Ross
William Rost
Kristyn Rost
Dennis Rote
Edward R. Roth
Shanda Ruck
Kimberly Rudisill
Tina Rudisill
James Sanders
Thomas P. Sanders
Nicole Sanderson
John K. Sanstead
Steven K. Schirk
Sheri Schlemmer
Amy L. Schlottag
Donna Schneider
Ronald Schneider
Betty Schonauer
Valerie Scott
David Seitz
Frederick N. Selby
Michael M. Sersen
Lauren Shaffer
Ernest Shanaman
Ernest & Mary Shanaman
April Sharp
James L. Shearer
Mike & Lynn Shearer
Lynne Shelton
Edward S. Shiller
Arlene Shindler
Dale W. Shirey
Steven & Susan Shirk
Basil Shorb
Robert A. Shue
K.L. Shultz
Kenneth A. Shultz
Brian Siatkowski
Debra Simon
James Singleton
Cynthia Sipe
Barbara Ann Sleeper
Heather Slenker
Patricia Slow
Crystal Smith
Darla Smith
Raejeanne Y. Smith
Stephen Smith
Sally E. Smith
Darla Smith
Matt Smith
Stephen Smith
Shirlee J. Smolin
Charles Snyder
Tom & Mary Ann Snyder
B. Robert Snyder
Carol Snyder
David Spangler
Sara Spangler
Deb Sparler
Kathy Spiegel

William H. Sprenkle
John & Betsy Stein
Heather & Glenn Stewart
Douglas Smith & Cindy Stewart
Scott Stock
Cathy Stouch
Gary & Catherine Strathmeyer
Shelby Strickler
Jill Striebig
Edward Surotchak
Joan Sweeney
Mary Ann Sweitzer
Donald Swope
Robert Szeyller
John J. Tassia
Beth Thieret
Marissa Throckmorton
Terri Tolomeo
M. H. Turnbull
Carol Turner
Wanda Turner
Herb Uffelman
Joseph B. Vottero
Richard & Carol Wagman
Barbara Wagner
Michael Wagner
Ashley Wagner
Cathy Wallemeyer
Dan Waltersdorff
Jessica Waltersdorff
Thomas W. Waltersdorff
James D. Ware
Stephanie Warner
Jack M. Weaver
Tammy & Tom Weimann
Pamela Weinberg
Polly Weiss
Michelle Wenger
Beverly W. Werner
Metza Whiteley
Chad Whitesel
Dave Whitmarsh
Tara Wiley
Lisa Winters
Eric & Sherrie Wolfgang
Dennis Workinger
Kathleen Wozniak
Dawn Wuorinen
Marsha A. Yanick
John S. Yohe
Craig Young
Bryan Zabonick
Mark T. & Anne E. Zerbe
Kathryn Zuilkoski

*Thank
you!*

Connect With Us!

www.childrenshomeofyork.org

www.facebook.com/childrenshomeofyork/



Administration and Permanency Building



BRIDGES™ and Prevention Building



A.N.G.E.L. Center - RTF



Independent Living Program at George Street



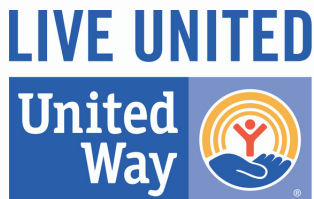
RISE Program

Children's HOME

77 Shoe House Road

York PA 17406

717-755-1033



United Way of York County
Partner Agency

